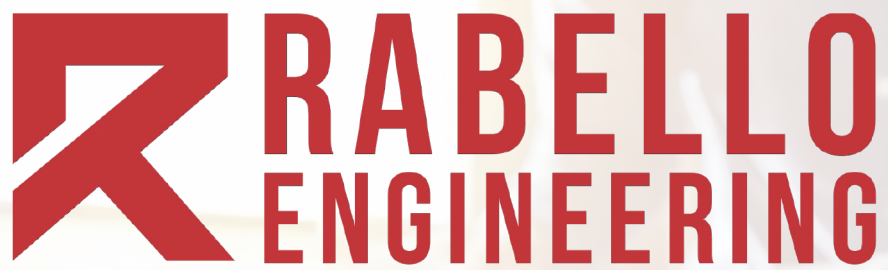


CAPABILITY STATEMENT



Building, Civil & Infrastructure

Rabello Engineering Pty Ltd

Address: 1/7 Heddon Road, Broadmeadow NSW 2292

ABN: 47 673 726 862

Phone: 02 4092 8462

Email: info@rabelloengineering.com

Website: www.rabelloengineering.com



Rabello Engineering is a civil consulting company based in Newcastle, NSW, specialising in cost estimating, quantity take-offs, tender support, and project management for the building, civil and infrastructure sectors. With a deep understanding of Australian standards and construction practices, we provide tailored solutions to contractors, consultants and developers across the country.

At Rabello Engineering, our mission is to provide clarity and direction from the initial budgeting phase to the final delivery of your project.

Founded by Juliana and Eduardo Rabello, Rabello Engineering brings over 30 years of combined experience in civil estimating and infrastructure project management across Brazil and Australia.



Juliana Carraro Rabello, founder of Rabello Engineering, holds a Civil Engineering degree and postgraduate qualifications in Project Management and Leadership in Australia. With over a decade of hands-on experience, she has delivered high-rise and infrastructure projects and is an expert in cost estimating and contract negotiation. Juliana is passionate about innovation and helping clients improve efficiency through strategic planning and technology.

Eduardo Rabello is a civil engineer with 20+ years' experience leading complex infrastructure projects in rail, road, airport, and urban development. He holds a Civil Engineering degree and has overseen large-scale works such as road rehabilitations and airport upgrades. Eduardo specialises in full project delivery—from estimating to procurement and stakeholder engagement—bringing strong leadership to high-pressure environments.



Together, they lead Rabello Engineering with a focus on quality, innovation, and strong client partnerships.



COST ESTIMATING

- Cost Estimation
- Quantity Take-off
- BIM 4D and 5D models
- Programme
- Methodology
- Risk & Opportunity assessment
- Reports Package, including:
Price Schedule, Direct Cost Summary,
Overhead Cost Summary, Resources

PROJECT MANAGEMENT

- Site support and associated QA documentation
- Cost Control and Forecast
- Procurement of Subcontractors and Suppliers
- Purchase Orders and Delivery Management
- Progress Claims
- Variation Assistance
- Risk Mitigation Plans
- Reporting regularly on progress to the client



Tailored to Your Company's Profile: Our Services Optimised for Your Needs!

At Rabello Engineering, we understand that every company is unique. That's why our services are custom-tailored to fit your specific profile. We consider crucial factors such as your self-perform activities, resource availability, internal rates, and production capacity to ensure optimal results. With our personalised approach, we guarantee solutions that align perfectly with your business objectives.



At Rabello Engineering, our expertise is built on years of hands-on experience across a diverse range of building, civil, and infrastructure projects. Before founding Rabello Engineering, our team members played key roles in the successful delivery of major projects throughout Australia, working with industry-leading companies. The following projects showcase the experience and contributions of our team throughout their careers:

Kurri Kurri Lateral Pipeline Project – Civil Works

Client: Alltype Engineering

Project Duration: September 2023 – February 2025

Scope of Work:

The project involves constructing new road pavements and implementing stormwater drainage systems to improve infrastructure resilience. It also includes installing street lighting, barriers, and signage, along with other associated works to enhance safety and functionality.

Key Contributions:

- Assisting with claims and variations
- Project planning and leadership
- Cost tracking and forecasting
- Procurement, quality assurance, and health & safety compliance
- Client liaison

Mt Pleasant Tailings Dam and Site-Wide Earthworks

Client: MACH Energy Australia

Project Duration: July 2022 - September 2022

Scope of Work:

The project involves building a new Mine Water Dam, along with extensive earthworks, drainage, and road construction across the site.

Key Contributions:

- Cost estimation and quantity take-off
- Preparing methodology and programme
- Using Expert Estimation software for cost modeling



Cundletown Bypass (Cundletown, NSW)

Client: Mid Coast Council

Project Duration: July 2022 – July 2023

Scope of Work:

The project involves the construction of new road pavements alongside the installation of stormwater drainage systems to enhance infrastructure durability and functionality. Additionally, it includes the installation of street lighting, barriers, and signage, along with other associated works to improve safety and accessibility.

Key Contributions:

- Cost estimation including quantity take-off
- Using Expert Estimation software to develop precise cost models
- Ensuring financial feasibility through detailed cost assessments
- Managing project planning, claims, and variations
- Leading teams and tracking project costs
- Ensuring procurement, quality assurance, and safety compliance
- Client liaison

Snowy Hydro 2.0 – Tantangara Dam

Client: Snowy Hydro

Project Duration: September 2020 - February 2021

Scope of Work:

The Snowy Hydro 2.0 is Australia's largest committed renewable energy project, connecting the Tantangara and Talbingo dams through 27km of tunnels and a new underground power station.

Key Contributions:

- Supporting procurement through contract price analysis
- Reviewing construction methodologies and commercial risks
- Assisting with KPI tracking and quality assurance documentation
- Monitoring production tracking for the Tunnel Boring Machine (TBM) Portal construction



Murchison Highway Upgrade (Tullah, TAS)

Client: Department of State Growth

Project Duration: May 2021 - July 2022

Scope of Work:

The project includes road widening, along with the necessary clearing and earthworks to accommodate the expanded roadway. It also involves resurfacing, vertical realignment, and upgrades to intersections to improve traffic flow and safety. Additionally, the scope encompasses drainage and stormwater work, including upgrade to Central Creek Bridge to ensure efficient water management and structural resilience.

Key Contributions:

- Quantity take-off and cost estimation
- Reviewing construction methodology and risk assessment
- Collaborating with client to refine project scope and budget constraints
- Assisting with project claims and variations
- Cost tracking and forecasting
- Procurement and contractor management

Sydney Light Rail Project (Sydney, NSW)

Client: Transport for NSW

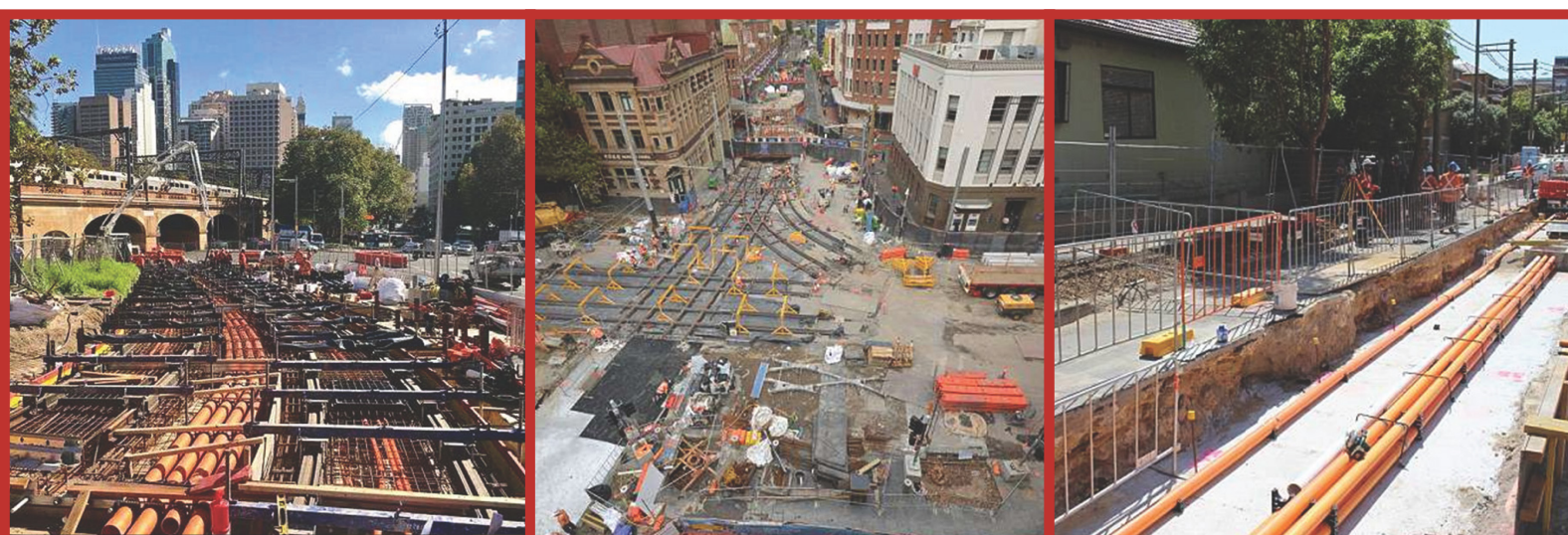
Project Duration: April 2017 - January 2019

Scope of Work:

The project consisted of the design, construction and financing of the light rail network, and its operation and maintenance until 2036. This has covered the 12 km CSELR dual-track route (CBD and South East Light Rail), and the subsequent operation of 25 km of infrastructure, connecting the new infrastructure with the Inner West Light Rail, an existing 13 km line.

Key Contributions:

- Managing subcontractors and suppliers
- Quality assurance and health & safety compliance



Rio Tinto Project – Rehabilitation of Weipa Arterial Roads (Cairns, QLD)

Client: Rio Tinto

Project Duration: January 2019 - May 2020

Scope of Work:

The project involves the rehabilitation of 15.8 kilometres of pavement surface along the main arterial route. It includes pavement rehabilitation and patch repair, as well as shoulder and edge repair and reconstruction. Additionally, the scope covers rut and depression filling to restore the road's structural integrity, followed by resealing works to enhance durability and longevity.

Key Contributions:

- Preparation of first-principles cost estimation
- Quantity take-off
- Liaising with suppliers and subcontractors to obtain competitive pricing
- Assessing risks related to cost, time, quality, and contractual obligations
- Cost tracking and procurement of materials and subcontractors
- Quality assurance and health & safety compliance
- Client liaison and preparation of monthly reports

Qantas Project – Sydney Airport (Sydney, NSW)

Client: Qantas

Project Duration: October 2015 - April 2017

Scope of Work:

This project was undertaken as part of the Qantas master plan to construct a new hardstand area for the maintenance and washing of Boeing 747 aircraft at the Qantas Jet Base in Mascot. To allow for the wingspans of this aircraft type, a nearby roadway and security gates used by catering trucks to access aircraft had to be relocated resulting in the loss of several carpark spaces.

Key Contributions:

- Cost tracking and procurement
- Quality assurance and safety compliance
- Client liaison



The knowledge and experience gained through these and many other projects form the foundation of Rabello Engineering today. We apply this expertise to deliver high-quality estimating and project management services, ensuring the best outcomes for our clients.

